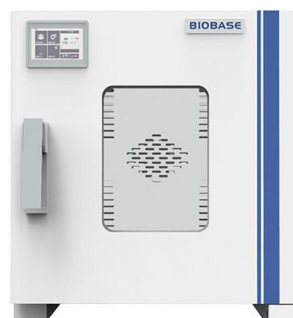


Touch Screen Constant-Temperature Incubator



Double-layer Door (D type)



Glass Viewing Window Door (G type)

Standard Accessories: Optional Accessories:



Test port



Base stand



Footmaster Caster



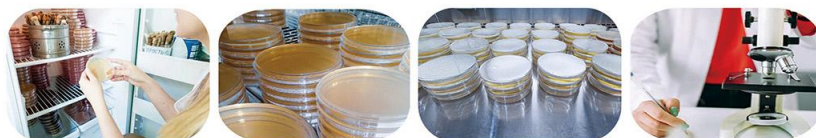
UV lamp

Introduction:

The constant temperature incubator provides stable temperature control and can accurately adjust the temperature within a certain temperature range to meet different experimental needs.

Applications:

This series of products can be used for scientific research such as storing strains and biological cultivation in laboratories and laboratories of scientific research institutions, colleges and universities, biology and agriculture.



Features:

- * Large LCD touch screen.
- * Stainless steel chamber, easy to clean.
- * D type: with inner glass door.
- * G type: with viewing window.
- * Multi-stage temperature calibration, smaller temperature deviation in different temperature ranges.
- * Anti-slip partition design, adjustable spacing, flexible and convenient.
- * Test port is standard on the side of the box for detection and calibration.
- * Over temperature alarm, independent limit temperature alarm system, leakage current and over-voltage protector.

Technical Parameters:

Model	BJPX-H54BK(D/G)	BJPX-H88BK(D/G)	BJPX-H160BK(D/G)	BJPX-H200BK(G)	BJPX-H270BK(D/G)
Capacity	54L	88L	160L	200L	270L
Temperature Sensor	PT100				
Temperature Range	RT+5~85℃				
Temperature Fluctuation	±1℃ (@37℃)				
Temperature Uniformity	±2℃ (@37℃)				
Temperature Precision	0.1℃				
Timing Range	0~999h or continuous				
Display	LCD touch screen				
Power Supply	AC 220V, 50/60Hz(Standard); 110V, 50/60Hz(Optional)(G type: external transformer)				
Power Consumption	345W		495W	645W	
Shelves	2pcs				
Standard Accessories	Shelf, test port				
Optional Accessories	Footmaster, shelf, UV lamp				
Internal Size(W*D*H)	395*364*395mm	500*360*500mm	558*518*600mm	598*548*638mm	665*600*720mm
External Size(W*D*H)	D type: 536*588*681mm	D type: 650*573*793mm	D type: 718*732*890mm	725*809*830mm	D type: 831*824*1037mm
	G type: 522*626*587mm	G type: 627*621*692mm	G type: 685*779*790mm		G type: 791*859*912mm
Packing Size(W*D*H)	D type: 670*690*850mm	D type: 755*660*955mm	D type: 825*830*1060mm	830*895*990mm	D type: 920*900*1200mm
	G type: 630*715*750mm	G type: 835*710*850mm	G type: 790*865*960mm		G type: 900*945*1075mm
Gross Weight	D type: 62kg	D type: 72kg	D type: 100kg	89kg	D type: 115kg
	G type: 49.5kg	G type: 58.5kg	G type: 82kg		G type: 102kg